

# ONE-CARE<sup>®</sup>

SAFETY PEN NEEDLES **PRO**



*Insulin delivery has never been easier...*

## Safety

Clear safety shield automatically locks after use to protect the needle

## Ergonomic Design

Ergonomic main housing with ribs for comfortable grip

## Simple

Color indicator becomes invisible after engagement of safety mechanism

## Universal

Compatible fit with most pen injectors

### SAFE

- Automated shielding mechanism ensuring that needle is covered before and after use
- Single-use mechanism preventing sharps injuries and reuse of the device
- All safety pen needles are ETO-sterilized and protected with cover and sterility peel-off tab

### SIMPLE

- Safety mechanism engagement indicator via "Click" sound and disappearance of color coded inner shield after fully inserting the needle into the skin
- Optimally designed, clear shield for precise placement on injection site with improved visibility

### GENTLE

- Design with concealed needle helps to relieve patient's anxiety
- Polished, silicone-coated, ultra-thin needles are ideally positioned during skin penetration thanks to precise tracks for the safety mechanism elements enhancing patients comfort
- Ribbed housing provides a comfortable grip for easy attachment and removal from the pen

### UNIVERSAL

- Universal design for compatible use with most injection pens available on the market
- Tight fit prevents leakages of insulin
- Easy to recognize color-coded product versions address a variety of patient skin types and injection requirements



## INTERNATIONAL STANDARDS

- Rigorously tested per international standards for fit, functionality and reliable performance

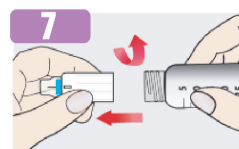
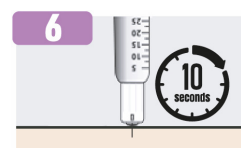
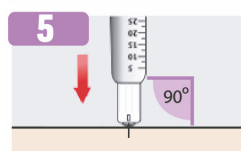
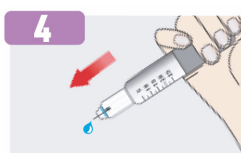
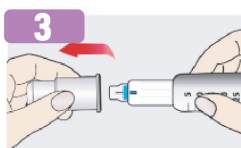
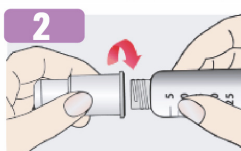
Compatible with all type A insulin pens as per ISO11608-2, including:

COMPATIBILITY	<b>Novo Nordisk</b>	NovoPen® FlexPen®, NovoPen® FlexTouch®, NovoPen® Echo, NovoPen® 4, NovoPen® 5, InDuo®, InnoLet®, Victoza®
	<b>Eli Lilly</b>	KwikPen®, Forteo®, Huminsulin®, HumaPen®, HumaPen® Savvio™, HumaPen® Luxura™ HD, HumaPen® MEMOIR™
	<b>Sanofi</b>	Apidra® SoloSTAR®, ClickSTAR®, Lantus® SoloSTAR®, Toujeo® SoloSTAR®, AllSTAR™, JuniorSTAR®, Lyxumia®, OptiPen® Pro 1
	<b>BD</b>	BD® Pen
	<b>Astra Zeneca</b>	Byetta®
	<b>Owen Mumford</b>	Autopen® Classic, Autopen® 24
	<b>B. Braun</b>	Omnican® Pen 31
	<b>Ypsomed</b>	Ypsopen®, OptiClik®
	<b>Berlin Chemie</b>	BerliPen® Areo 2/3, BerliPen® Areo 301/302, BerliPen® Junior, BerliPen® Precision
	<b>Haselmeier</b>	Diapen®, TactiPen®
<b>Bioton</b>	GensuPen®	

Brands are trademarks of their respective owners

## INSTRUCTIONS FOR USE

- Intuitive handling with simple steps. Insulin delivery has never been easier...



### ACTIVATION INDICATION

#### ATTACH

- 1 - Peel off the sterility seal
- 2 - Attach the pen needle onto the pen by screwing it in clockwise
- 3 - Remove the outer cover

#### PRIME AND INJECT

- 4 - Prime the pen needle by dispensing a drop of insulin
- 5 - Insert pen needle into injection site under 90 degree angle
- 6 - Wait 10 seconds after fully depressing pen button to deliver the entire insulin dose

#### REMOVE AND DISPOSE

- 7 - Remove the needle from the pen by unscrewing it counter-clockwise
- 8 - Dispose of the used pen needle into sharps container

## PRODUCT SELECTION CHART

- Available in two color-coded product versions for the right fit for every patient and skin type

CODE	DESCRIPTION	DIAMETER (G) x DEPTH (mm/in)	COLOR	PACKAGING
3201	ONE-CARE PRO SAFETY PEN NEEDLES	31G x 5mm (3/16 in)	PURPLE	100 pcs / box 2,000 pcs / case
3202	ONE-CARE PRO SAFETY PEN NEEDLES	31G x 8mm (5/16 in)	BLUE	100 pcs / box 2,000 pcs / case

WWW.ONE-CARE.COM

#### Americas

#### Europe

