

ONE-CARE™ PLUS

CONTACT-ACTIVATED SAFETY LANCETS



Blood microsampling has never been easier ...

Ergonomic

Ergonomic body for comfortable grip

Comfortable

Wide cap for easy twist off

Reliable

Reliable safety activation mechanism

SAFE

- Fully enclosed housing ensures that needle is hidden before and after use
- Single-use mechanism prevents sharps injuries and reuse of the device
- Lancet needles are over-molded in plastic, protected with a safety cap and Gamma-sterilized

COMFORTABLE

- Silicone-coated, ultra-sharp needles, ideally positioned during skin penetration with double-spring mechanism to reduce vibrations
- Color-coded product versions to meet specific blood sample requirements and address a variety of patient skin types
- Ergonomic design for comfortable grip and secure blood collection

SIMPLE

- Easy to use, intuitive operation in 3 steps only, no pre-loading required
- Wide safety cap designed for easy removal - simply twist off the cap and pull it out
- Optimal skin contact area for precise positioning on the desired test site and adequate blood flow



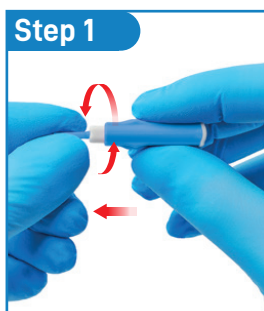
Every product detail
designed with ease
of use and comfort in mind

ONE-CARE™ PLUS

CONTACT-ACTIVATED SAFETY LANCETS

INSTRUCTIONS FOR USE

- Intuitive design with only 3 simple steps.
Blood microsampling has never been easier ...



Step 1
Twist off and pull out the protective cap



Step 2
Press against test site to activate the device



Step 3
Collect blood sample and discard the device into sharps container

TEST SITE PREPARATION AND SELECTION

Information

Prick the side of the finger, not the pad



- > Patient should wash hands with warm water and soap before blood collection
- > Test site should be disinfected with alcohol swab
- > Blood collection should be performed on the sides of the fingertip, not the pads
- > Index, middle and ring fingers are recommended
- > Apply intermittent pressure on the finger below test site to enhance blood flow if needed

ORDERING INFORMATION

Available in six color-coded versions to meet different test blood flow requirements and address a variety of patient skin types.

REF.	VERSION	DIAMETER (G) / DEPTH (mm/in)		COLOR	PACKAGING
1001	Micro Flow	30G / 1.5 mm			100 pcs/box 2,000 pcs / case
1002	Mini Flow	28G / 1.8 mm			100 pcs/box 2,000 pcs / case
1003	Low Flow	25G / 1.8 mm			100 pcs/box 2,000 pcs / case
1004	Normal Flow	21G / 1.8 mm			100 pcs/box 2,000 pcs / case
1005	High Flow	21G / 2.4 mm			100 pcs/box 2,000 pcs / case
1006	Max Flow	21G / 2.8 mm			100 pcs/box 2,000 pcs / case



WWW.ONE-CARE.COM

